

NPA personality test result

p1DF2 : Wednesday, 15 February 2012

p1DO2 : NA

p1DO3 : 53

p1DP3 : 40

p1DQ3 : 34

p1DO4 : -- ? --

p1DP4 : female

p1DQ4 : under 21

p1DO2 : NA

p1A150 : Your S-score was greater than 30 (elevated).

p1A151 : (Above 30-40 the probability of being a submissive type increases.)

p1A152 :

p1A155 : Your character type tends to sanguine:

p1A156 : NA

p1A157 : (narcissistic-aggressive)

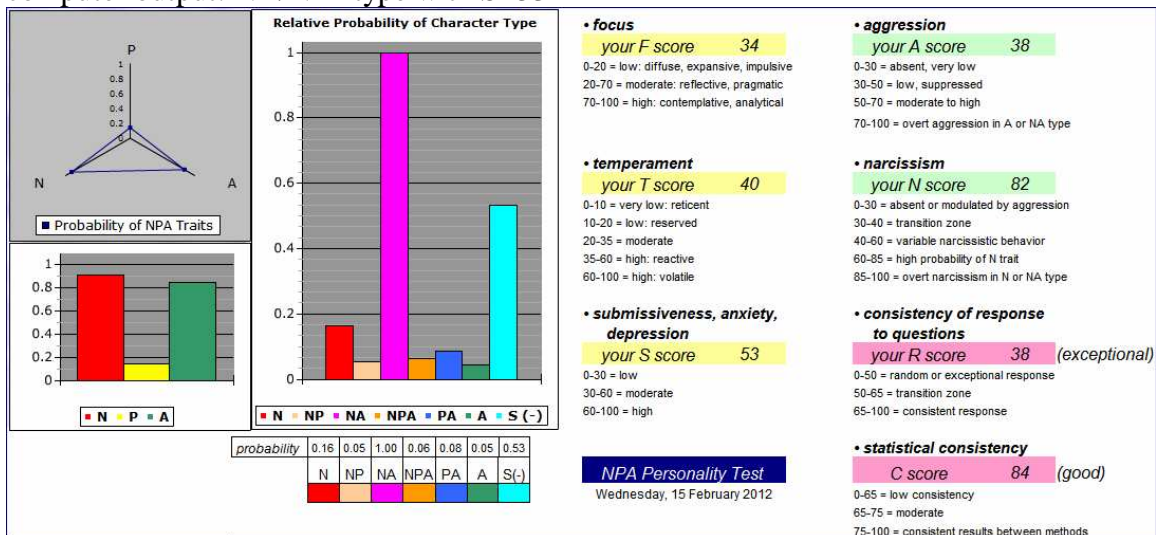
p1A159 : Since your S-score was somewhat elevated, consider the probability that your character type

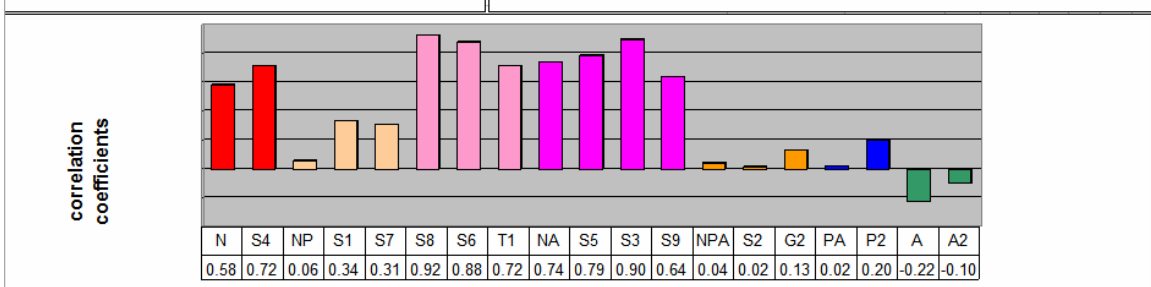
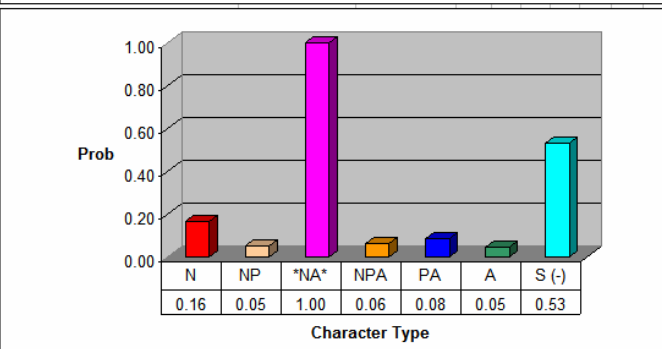
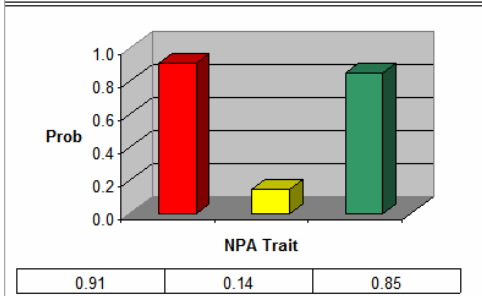
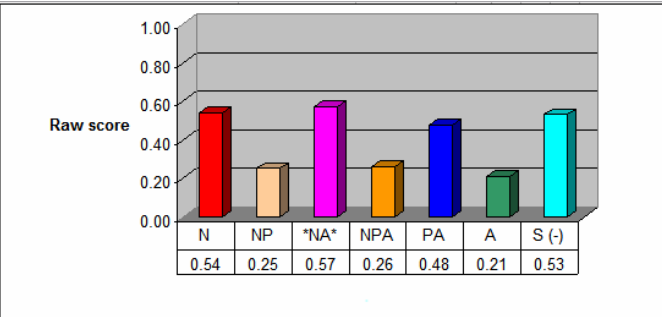
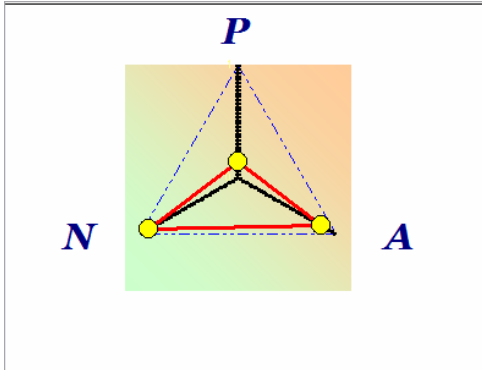
p1A160 : is a variant Narcissistic-Aggressive type:

p1A161 : Narcissistic-Aggressive with a tendency to submissive behavior (NA- or NA=).

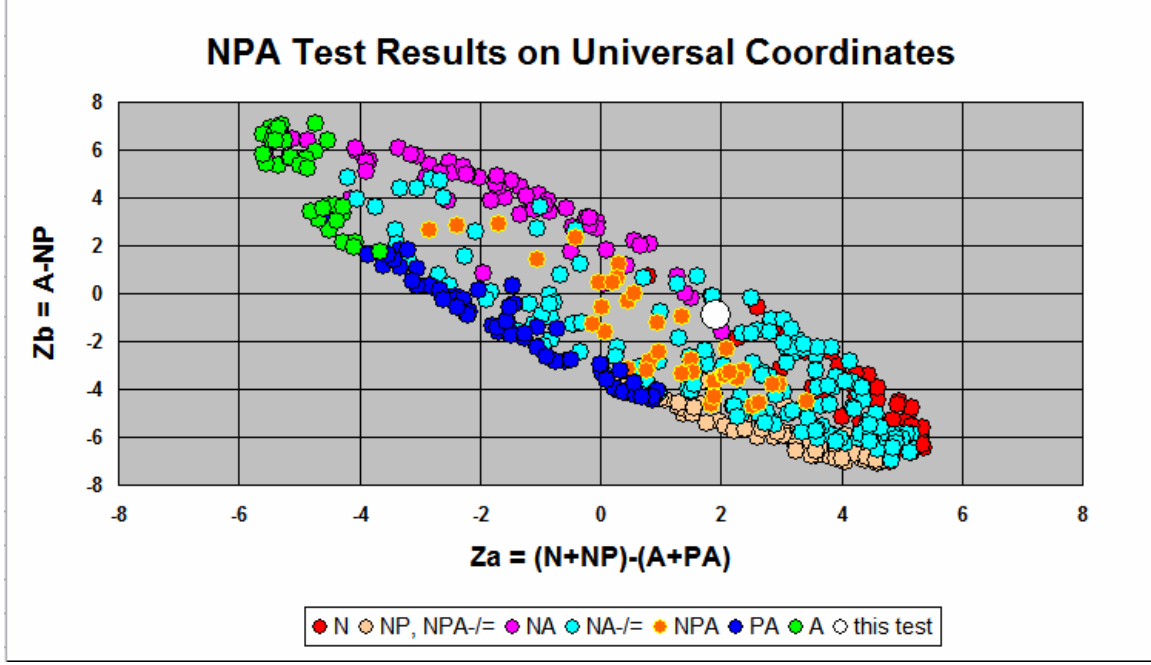
female, age under 21

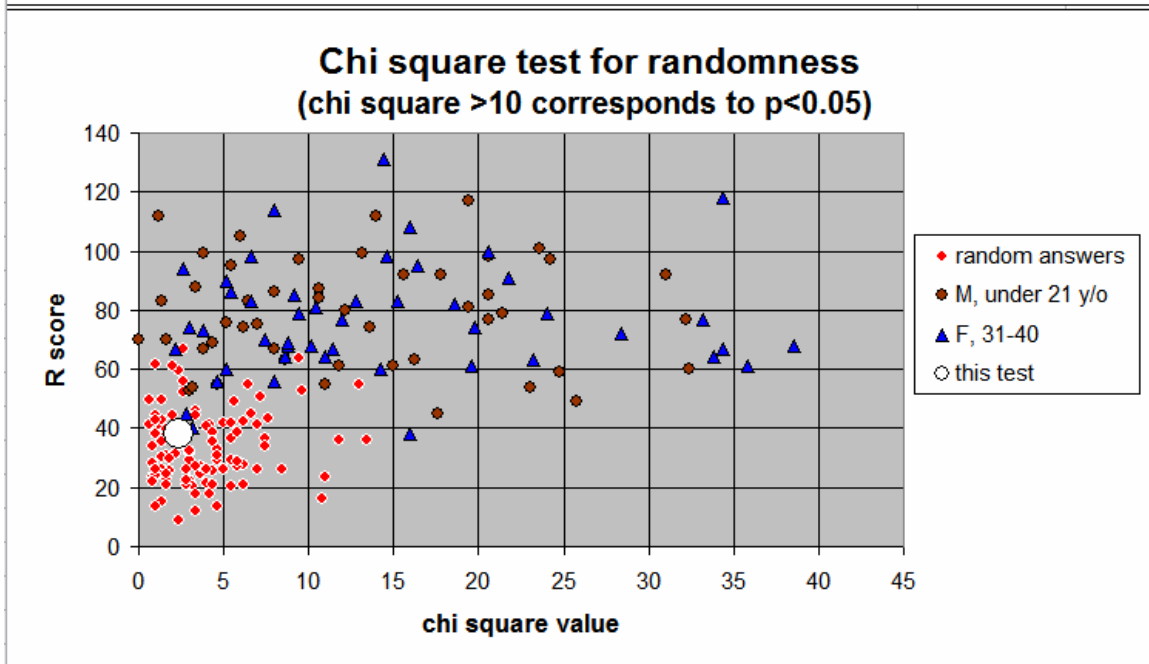
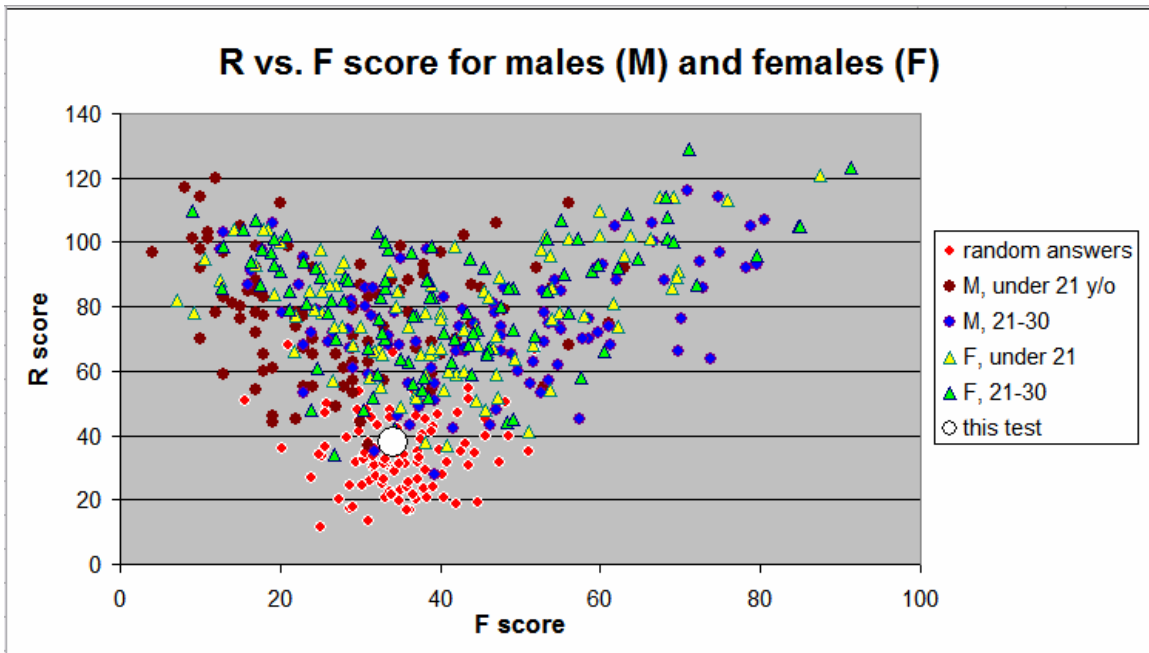
computer output: NA/NA- type with S=53





S, T, F scores	53	40	34	R	C
Aggression, A score				38	84
Narcissism, N score	82			***	





- Correlation coefficients :

N, NP, NA, NPA, PA, A – dominant types

S4 – N with high S score

S1 – NPA-/=

S7 – NPA-/= with high PA score

S8 – N/NA- with moderate S score

S6 – NA- with high S score, low NP score

T1 – N/NA- with high NP score

S5 – NA with moderate S score

S3 – NA with high S score

S9 – NA with high S score, high PA score

S2 – NPA with higher S score but below 20

G2 – NPA with higher S score but above 20

P2 – PA with moderate S score

A2 – A type with moderate NA score

- S, T, F and Aggression scores on scale of 0 to 100

- S score:

0-30 = low

30-60 = moderate

60-100 = high

- T score:

0-10 = low: reticent

10-20 = low: reserved

20-35 = moderate

35-60 = high: reactive

60-100 = high: volatile

- F score:

0-20 = low: diffuse, expansive

20-70 = moderate: reflective, pragmatic

70-100 = high: contemplative, analytical

- Aggression, A score:

0-30 = absent, very low

30-50 = low, suppressed

50-70 = moderate to high

70-100 = overt aggression in A or NA type

- Narcissism, N score:
 - 0-30 = absent or modulated by aggression
 - 30-40 = transition zone
 - 40-60 = variable narcissistic behavior
 - 60-85 = high probability of N trait
 - 85-100 = overt narcissism in N or NA type

- Consistency of response (randomness R score):
 - 0-50 = random or exceptional response
 - 50-65 = transition area
 - 65-100 = consistent response to questions

- Consistency of response (chi square test for random response):
 - (chi square value >10 corresponds to $p < 0.05$)

- Consistency of statistical methods (C score):
 - 0-65 = low consistency
 - 65-75 = moderate
 - 75-100 = consistent results between statistical methods

- Universal coordinates (Za & Zb):
 - Za mean from correlation coefficients N, S4, NP, S1 and PA, P2, A, A2
 - Zb mean from A, A2, NP, S1